



Your Global Testing,  
Inspection & Certification Partner

# Are You Ready for FCC to Amazon?

## FCC Part 15 Subpart B

### TOYS

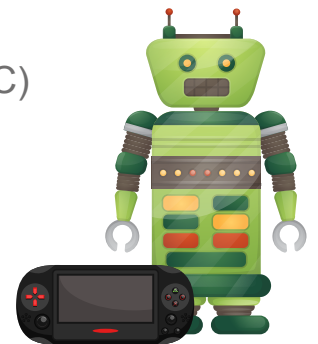
Batteries Operated Toys

Batteries Operated Toys with Rechargeable  
Battery and Charging by USB Cable Only

### ELECTRICAL DEVICES

Direct Current (DC)

Alternating Current (AC)



## FCC Part 15 Subpart C

Radio-Controlled toys (27 MHz / 433 MHz / 2.4 GHz)



## Special Offer

**FCC Part 15 Subparts B and C for**

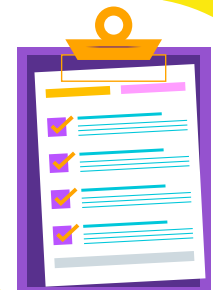
Get ready!! Amazon FCC mandatory effective on 7-MARCH-2022

amazon

**STC**

★ **CPSC Approved Lab** (Number 1014)  
U.S. Consumer Product Safety Commission

★ **FCC Testing Accredited Lab** (HK0001)



+852

2666 1895  
2666 1889



hktcd@stc.group



10 Dai Wang Street, Tai Po Industrial Estate, Tai Po, N.T., Hong Kong



www.stc.group